

May is:

Revise Your Work Schedule Month

June is:

Rebuild Your Life Month

The Chronicle of The Cubicle

Where Do We Go From Here?

It's like being jarred awake from a bad dream, you're disoriented, nothing is as it seems and it takes a little while to get your bearings. Welcome to our "new normal."

After weeks, months, years of being in lockdown it's now time to begin the slow transition back and figure out where everything is and how it works together now. Questions like,

- How do we keep everyone separated but working together?
- How close is really too close?
- Are one way hallways the way to go?
- How quickly can we ramp up and be safe?
- If everyone is working from home, what do we do with all of this stuff?
- How clean does everything need to be?

And so many more are being bounced around the zoom calls of management teams around the country. So where do we go from here? It's a good question and one we'd like to hear your responses on.

What are you doing to get back to a degree of normal? What challenges are you facing or expect to be facing in the months ahead? Drop us a note or better yet let's get together, we'll bring the masks, coffee and bagels.

Inside this issue:

Where Do We Go From Here?

Is 6' Really Far Enough?

Product Spotlight: Covid 19 Dividing Screens

More Resources

May & June 2020

The Months For:

- ◆ Flexible Work Arrangement Week, May 3-9
- ◆ National Hospital Week, May 10-16
- ◆ National Backyard Games Week, May 25-6/1
- ◆ National Lemonade Days, June 6-13
- ◆ National Pet Wedding Week, June 14-20
- ◆ National Craft Spirits Week, June 21-27
- ◆ Watermelon Seed Spitting Week, June 25-28

Is 6' Really Far Enough?

If you read the St. Louis Business Journal late in May you might have seen the article about spacing. If not here's a recap.

The article reviewed the conversation with Pratim Biswas, head of the Aerosol and Air Quality Laboratory at Washington University.

His team reviewed five critical measures businesses should take when reopening.

1. Testing to see if anyone is a carrier. If testing is not available then taking temperatures as a minimum.
2. Physical Distancing. The CDC recommendation is 6 feet. But their recommendation is more like 10 to 12 feet. More on that in a moment.
3. Face Masks. Everyone should wear a mask in public to assist in protecting other people.
4. Cleaning Protocols. Air particles eventually settle onto surfaces and these surfaces need be to thoroughly cleaned. And if you are leaving it up to your cleaning service, good luck. Referring back to an earlier article on vacuuming, you can be assured the surfaces are not much cleaner. So get out the wipes and sprays and get after it.
5. If you feel sick stay home. This should be the rule always especially during the cold and flu season. With the trend, BC (Before Covid) to move to a more open office, the spreading of viruses was much easier. Now with a more serious health threat that does not currently have a vaccine, this can make office epidemics much easier to occur.

Now back to the whole distancing thing. Mr. Biswas expands on the reasoning for the extra space. If 2 two people are passing by in a casual manner the 6 feet is probably just fine. But in an extended period of closeness their read on the research is the 10-12 feet is more appropriate.

Cont'd on page 2

Is 6' Really Far Enough? Cont'd

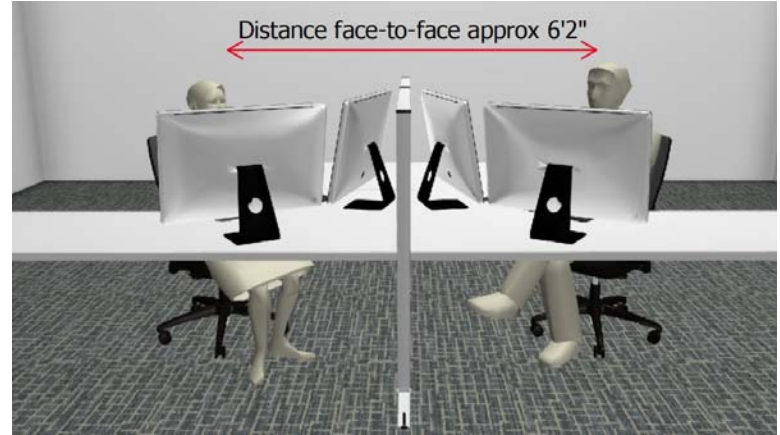
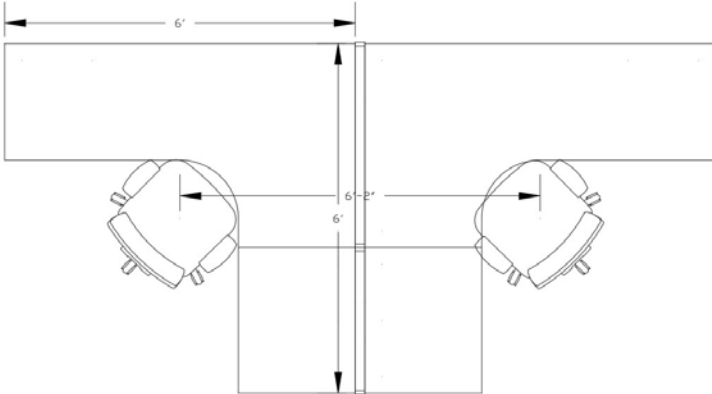
Continued from Page 1

This is also affected by the quality of the air circulation and filtering system in place in the building. If you rent your space you may want to inquire about the buildings air quality.

If you own your building then you should have a pretty good handle on what you need to do for maintaining or improving the quality issue.

To expand just a bit further we've assembled a couple of space plans showing cubicles and the relative lateral distance between people in a "normal" sitting position.

As you can see that the average 6' x 6' workstation / cubicle generally provides the required 6' spacing. And when taking into consideration a taller



panel (50" h or more) the distance that air has to travel extends past the 6 foot distance. However to achieve a minimum of 10' will require either making stations MUCH larger and/or increasing the height of dividers between people or the spacing between cubes. If you are using any sit-to-stand equipment in your workstations then the measurements become even bigger.

So what are you to do? This is a very good question and one that we don't currently have a great answer for, short of everyone wearing space suits to the office. But these are the kind of questions that will be worked on in the months / years ahead.

If you need assistance with determining your spacing give us a call.

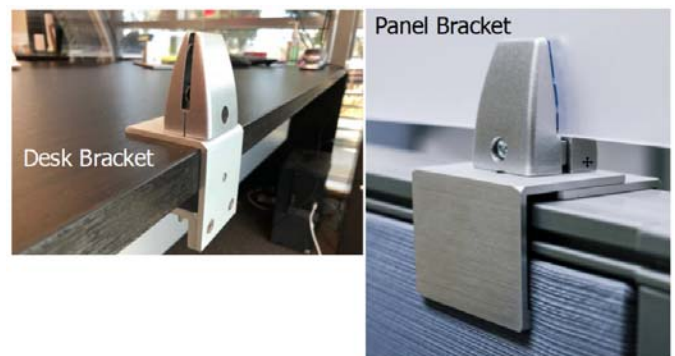
Product Spotlight: Covid 19 Dividing Screens

To continue carrying our Covid 19 Theme that we started, next up is a variety of dividers and screens that two of our have brought to market in the past 2 months. It began to trickle in at the beginning of April and by May everyone was introducing something to fill the need.

Needless to say that if you bought stock in a company that produces acrylic sheets before the crises, it is likely you are sitting on a win now. Nothing like an Apple stock but it has likely improved its markets value.

OBEX - Panel Extenders

First up is OBEX. This is a company that has been in the screen market for quite a few years. Their product offering has always covered screens for desk tops, panel tops and modesty panels so this is not a stretch for them. Acrylic panels are available in both clear and frosted. They have fabric panels as well but since those cannot be wiped down as required for cleaning they are not a good solution for dividing people for Covid 19 requirements.



Product Spotlight cont'd

Lead times for OBEX have gone out from about 2 weeks to 4 weeks due to the large quantity of orders they are receiving. This is the case for most manufacturers.

ENWORK

Next up is Enwork. Enwork is primarily known for great tables and benching systems. But their engineers have come up with a unique option. They have also come to the party with a few different offerings to fit the many variations that exist in the office today.

First up is Harbor Screens.

Harbor Screens are constructed of 1/4" cardboard. They ship flat and are easily assembled. Available in depths of 22" and 28" and widths of 24, 60, 70 and 72 inches. The 48" wide models come in brown cardboard and the larger sizes ship in white. They are very cost effective, can be wiped down and when you are finished with them, recyclable. They are stocked which makes them available quickly.



Next - Zori Freestanding Screens

Zori Screens come in individual and "T" style version (shown here).

With the option for all frosted acrylic or acoustic panels or a combination of acrylic top with laminate lower or acoustic top with laminate lower.

The screens are available in 48, 60 and 72 inch widths and 52 or 66 inch heights.

Lastly Enwork has a variety of screens to choose from depending on the application.

These include:

Edge Desktop Screens



Edge Deskwrap Screen



Stack-On Screen



Skyline Desktop Screen

Skyline Topper Screen



Other varieties are available from many of vendors - it is currently what is new and hot. Let us know if you'd like to see some options.



"Providing A Stress and Hassle Free
Step by Step Process To Your Furniture Needs"

402 W Mt. Vernon
#304
Nixa, MO 65714
www.interiordimension.com

!! It's Here !!
Your May-June 2020
NEWSLETTER
Has Arrived

!! MORE RESOURCES !!

"The challenge of leadership is to be strong, but not rude; be kind, but not weak; be bold, but not bully; be thoughtful, but not lazy; be humble, but not timid; be proud, but not arrogant; have humor, but without folly."

- Jim Rohn

"Every day may not be good, but there is something good in every day."

- Alice Morse Earle

We know, just what you were looking for, right? Like you haven't had enough input, emails, websites pushed at you with information coming out the ying yang about what you need to do.

We wanted to let you know that we have a specific page on our website that has a growing list of resources that you may find helpful.

We've assembled this page to provide some furniture specific ideas on what can be done for cleaning and care of your furniture in this hyper reality that we are experiencing.

Many are vendor specific guides but as most furniture is made of the same or similar types of materials these guidelines are applicable across a wide range of products and vendors.

As information comes to us we will update the page.

Here is the page address: <https://interiordimension.com/coronavirus-covid-19-business-guidance/>

You can also get there from our link on our home page at: <https://interiordimension.com>

We know you've heard it from everyone of your vendors - "We're here to help."

We aren't going anywhere so if you need ideas on spacing, moving, reconfiguring, downsizing, etc. let us know.

To Contact Us:

mbrooks@interiordimension.com

www.interiordimension.com

Phone: 636-386-5300

Newsletter designed and produced by:
businessgrowthpartners.net

